

Preset counters, electronic

LCD preset counters	1 or 2 presets – pulse, time – 5 kHz (AC+DC)	Codix 907 / 908
----------------------------	-----------------------------------------------------	------------------------



The pulse and time preset counters Codix 907 and 908 offer all important counter functions with an unbeatable price/performance ratio.

The counters offer easy, user-friendly installation thanks to their minimal installation depth and plug-in screw terminals; the 2-line LCD display is available with optional backlighting, making it even easier to read with just a quick glance.



DC 11 ... 30 V Supply voltage	AC 115 ... 230 V Supply voltage	-10°... +50°C Temperature range	000000 DIN 48x48	Prog Menu-driven programming	IP65 High protection level	max. 5 kHz Count frequency	Plug-in screw terminal	1 or 2 Presets 907: 1 / 908: 2	Multifunctional
2x6 LCDs LCD display	Multicolor display								

Powerful

- For pulse, time and position.
- Adding or subtracting.
- Automatic reset when preset is reached, or by key-press or electrically.
- Codix 907: 1 preset / Codix 908: 2 presets.
- 2 x 6-digit display and preset annunciators from -999999 to +999999.
- Display with or without backlighting, 2-color.

Simple

- Plug-in screw terminal.
- Simple menu-driven programming.
- Decade keypad, for each digit one key.
- DC or AC powered.
- Minimum installation depth.
- High protection level (IP65) with integrated front bezel gasket.
- With preset annunciators.

Order code	6.90 X . 0 1 0 X . X A 0
	<small>a b c d e</small>

a Number of presets

- 7 = 1 preset
- 8 = 2 presets

b Outputs

- 0 = relays

c LCD version

- 0 = no backlighting
- 1 = green backlighting
- 4 = 2-color, negative red / green backlighting

d Supply voltage

- 0 = 230 V AC
- 1 = 115 V AC
- 3 = 11 ... 30 V DC

e Input trigger level

- A = 4 ... 30 V DC level

Delivery specification

- Preset counter
- Mounting clip
- 8 pin screw terminal
- 7 pin screw terminal
- Operating instructions

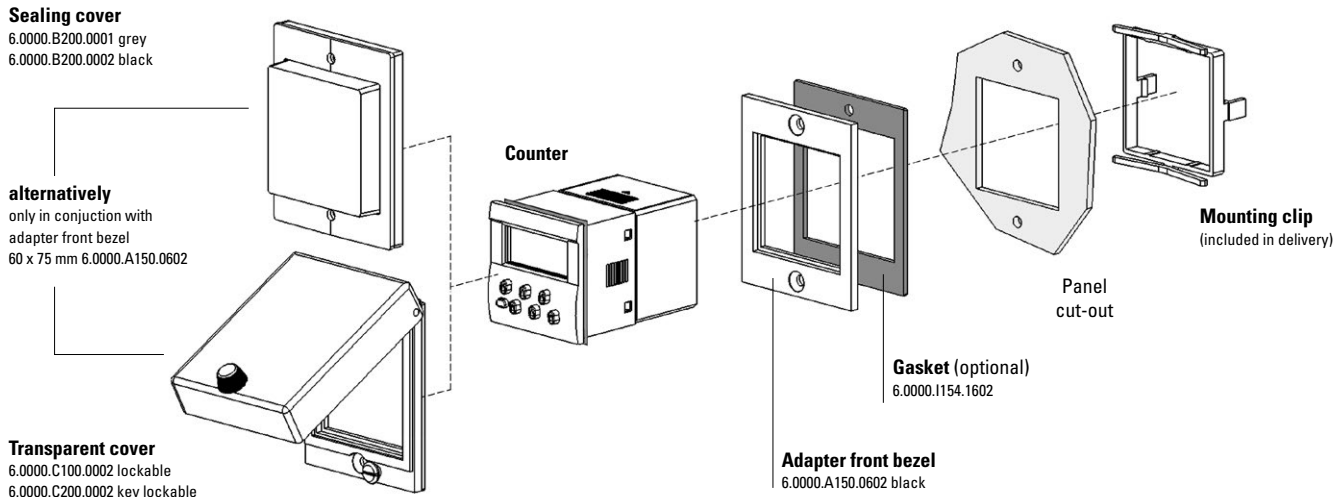
Stock types

- 6.907.0100.3A0**
- 6.908.0101.3A0**

Preset counters, electronic

LCD preset counters **1 or 2 presets – pulse, time – 5 kHz (AC+DC)** **Codix 907 / 908**

Accessories / Mounting examples



		Type / size	Description		Order no.	suitable gasket
Adapter front bezel		55 x 55 mm [2.17 x 2.17]	for cut-out 50 x 50 mm [1.97 x 1.97"] or ø 50,5 mm [1.99"] to cut-out 45 x 45 mm [1.77 x 1.77"]	grey black	6.0000.A100.1601 6.0000.A100.1602	6.0000.I104.1402
		55 x 55 mm [2.17 x 2.17]	for cut-out 50 x 50 mm [1.97 x 1.97"] to cut-out 45 x 45 mm [1.77 x 1.77"]	black	6.0000.A100.0602	6.0000.I133.0802
		60 x 75 mm [2.36 x 2.95]	for cut-out 50 x 50 mm [1.97 x 1.97"] to cut-out 45 x 45 mm [1.77 x 1.77"]	black	6.0000.A150.0602	6.0000.I154.1602
		72 x 72 mm [2.83 x 2.83]	for cut-out 68 x 68 mm [2.68 x 2.68"] to cut-out 45 x 45 mm [1.77 x 1.77"]	grey black Mating clip	6.0000.A160.1901 6.0000.A160.1902 6.0000.S100.0002	6.0000.I164.1402
		ø 72 mm [2.83]	for cut-out ø 60 mm [2.36"] to cut-out 45 x 45 mm [1.77 x 1.77"]	black	6.0000.A220.2002	–
Sealing cover IP65		K2	only in conjunction with adapter front bezel 60 x 75 mm 6.0000.A150.0602	transparent / grey	6.0000.B200.0001	–
				transparent / black	6.0000.B200.0002	–
Transparent cover IP65		2 Dv (mounted on bezel)	cover lockable, for cut-out 50 x 50 [1.97 x 1.97], only in conjunction with adapter front bezel 60 x 75 mm 6.0000.A150.0602	transparent / black	6.0000.C100.0002	–
				transparent / black	6.0000.C200.0002	–
Mounting frame		cut-out 50 x 50 mm [2.36 x 2.36]	for snap-on mounting on 35 mm [1.38"] top-hat DIN rail	chromated	6.0000.F200.0006	
Screw terminal (replacement part)			1 ... 8, pitch 3.81 9 ... 15, pitch 5.08	8-pin 7-pin	6.0000.S140.0009	
					6.0000.S150.0009	

incl. in delivery

Preset counters, electronic

LCD preset counters	1 or 2 presets – pulse, time – 5 kHz (AC+DC)	Codix 907 / 908
----------------------------	-----------------------------------------------------	------------------------

Technical data

General technical data	
Display	2 line 2 x 6 digits LCD display upper line 9 mm [0.35"], lower line 7 mm [0.28"], special sign 2 mm high [0.079"] standard positive green with optional backlighting 2-color upper line: negative, red backlighting lower line: negative, green backlighting
Operating temperature	-10 °C ... +50 °C [+14 °F ... +122 °F] (non-condensing)
Storage temperature	-25 °C ... +75 °C [-13 °F ... +167 °F]
Relative humidity at +40 °C [+104 °F]	93 % (non-condensing)
Altitude	up to 2000 m [6562']

Mechanical characteristics	
Protection	IP65 (front side)
Weight	AC version approx. 250 g [8.82 oz] DC version approx. 150 g [5.29 oz]

Electrical characteristics	
Sensor supply voltage	AC 115/230 V, ±10 %, 50/60 Hz, max. 6.5 VA DC 11 ... 30 V, max. 4 W
External fuse protection	230 V AC T 0.1 A 115 V AC T 0.125 A 11 ... 30 V DC T 0.2 A
Data retention	> 10 years, EEPROM
Input modes	pulse counter cnt.dir, up.dn, quad timer FrErun, InpA.InpB., InpB.InpB.
Sensor supply voltage	AC supply 24 V DC -40/+15 %, 50 mA at 230 V AC, 40 mA at 115 V AC DC supply max. 50 mA external supply voltage is connected through
Device safety	designed to EN 61010 part 1 protection class 2 application area pollution level 2

Inputs	
Count inputs	A and B (timer: A = Gate)
Polarity of the inputs	programmable for all inputs in common, NPN/PNP
Input resistance	10 kΩ
Count frequency	max. 5 kHz (details see manual) can be damped to 30 Hz (mechanical contacts)
Control / Reset input	Lock, Reset
Min pulse duration of signal and control inputs	statical / 1 ms
Switching levels with AC/DC supply	4 ... 30 V DC: low 0 ... 2 V DC high 3.5 ... 30 V DC
Pulse shape	variable, Schmitt-Trigger characteristics

Outputs	
Switching voltage	max. 250 V AC / 110 V DC
Switching current	max. 3 A AC/DC min. 30 mA DC
Switching capacity	max. 750 VA / 90 W
Output 1	Mech. service life (switching cycles) 2 x 10 ⁷ N° of switching cycles at 3 A / 250 V AC 1 x 10 ⁵ N° of switching cycles at 3 A / 30 V DC 1 x 10 ⁵ Relay with closing contact, progr. normal closed or normal open.
Output 2	Mech. service life (switching cycles) 20 x 10 ⁶ N° of switching cycles at 3 A / 250 V AC 5 x 10 ⁴ N° of switching cycles at 3 A / 30 V DC 5 x 10 ⁴ Relay with changeover contact
Reaction time of the outputs	pulse counter < 15 ms timer < 10 ms

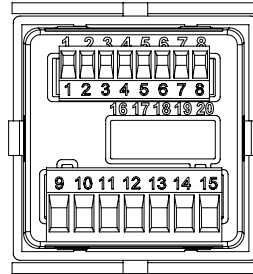
Approvals	
CE compliant in accordance with	
EMC Directive	2014/30/EU
RoHS Directive	2011/65/EU
Low Voltage Directive	2014/35/EU

Preset counters, electronic

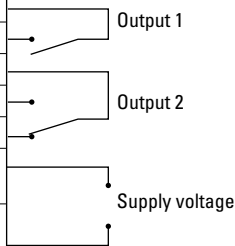
LCD preset counters	1 or 2 presets – pulse, time – 5 kHz (AC+DC)	Codix 907 / 908
----------------------------	-----------------------------------------------------	------------------------

Terminal assignment

Pin	Signal and control inputs
1	Sennsor supply voltage
2	GND (0 V DC)
3	INP A (Signal input A)
4	INP B (Signal input B)
5	RESET (Reset input)
6	LOCK (Key locking input)
7	n. c.
8	n. c.



Pin	Version with relays
9	Relay contact C.
10	Relay contact N.O.
11	Relay contact C.
12	Relay contact N.O.
13	Relay contact N.C.
14	AC: 115/230 V AC N~ DC: 11 ... 30 V DC
15	AC: 115/230 V AC L~ DC: GND (0 V DC)



Dimensions

Dimensions in mm [inch]

